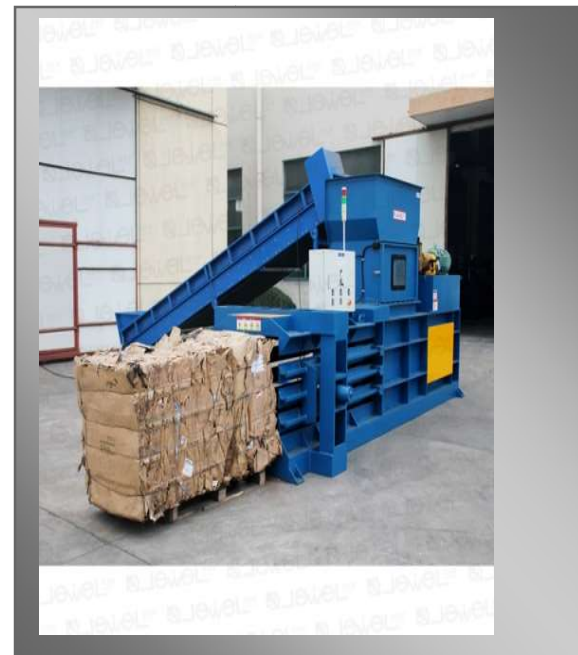


BALER MACHINE / COMPACTOR

Baling machines is a piece of farm machinery used to compress scrap metal and waste material (such as hay, cotton, flax straw, salt marsh hay, silage, old newspapers, magazines, industrial waste paper, cardboard, pet bottle, copper, aluminum, precious metals) to create dense blocks to increase the density of scrap. It reduces the physical volume of the material in the finished bale so the storage and transportation costs make it easy to handle. **NxGen** has been contributing to the betterment of our natural environment through eco-friendly baling systems. Baling systems provide effective

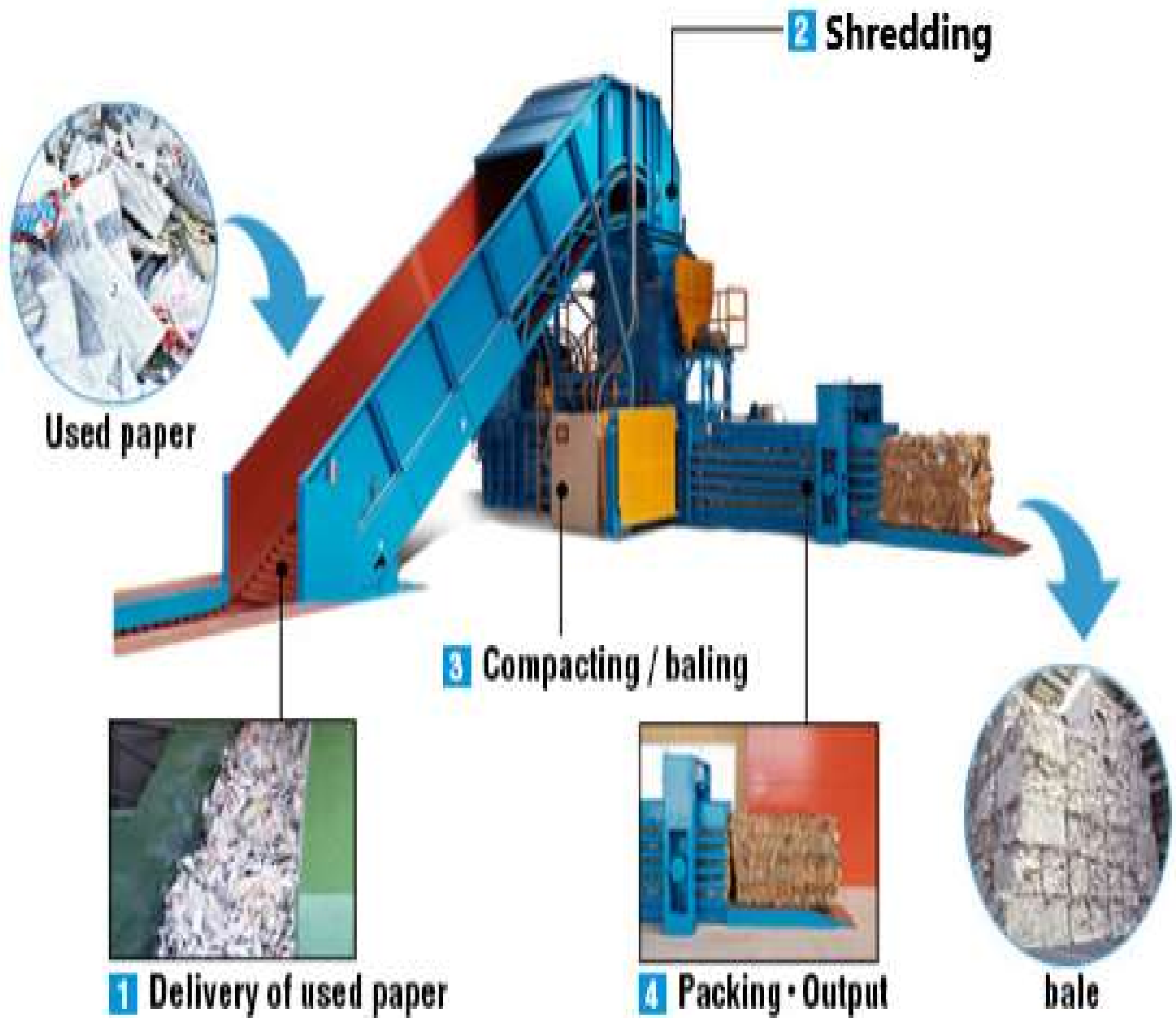


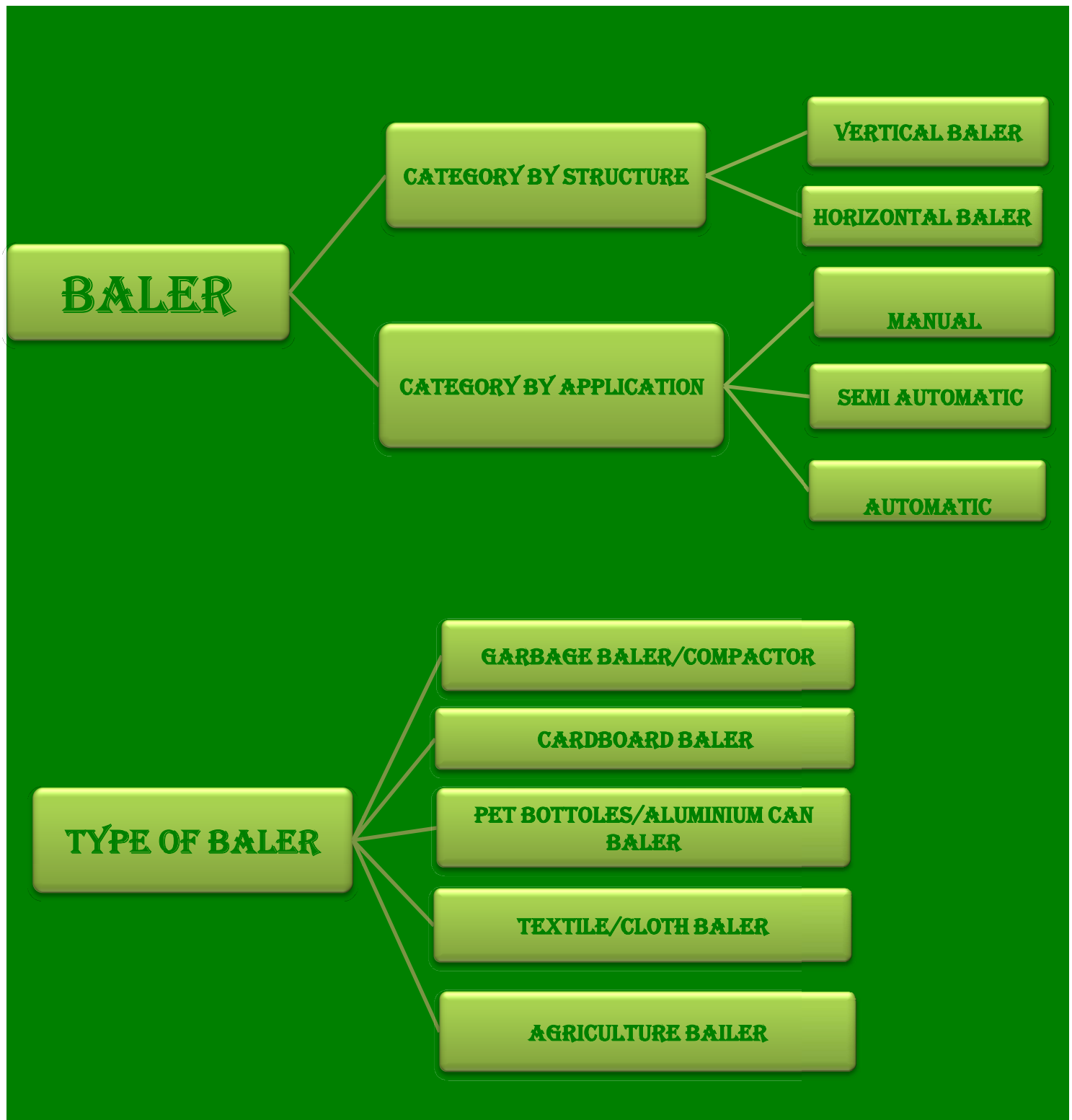
HORIZONTAL BAILER



VERTICAL BAILER

BALER MACHINE / COMPACTOR







CATEGORY BY STRUCTURE

VERTICAL BALERS:

Vertical baler is a name for baling machines that are loaded from the front. Typically, these recycling machines are smaller and manually strapped. They compress from the top-down due to which such vertical baler is also called down stroke baling press machine or vertical baler.

These vertical baling machines are best suited for textile manufacturers, warehouses, cardboard, cartons, coconut fiber, plastic bottles and UBC (used beverage containers). So they can be used for a wide variety of waste materials and situations.

Vertical baler machine can be single ram or dual ram bailing press, and have a compressing force of anywhere from 10 tons to 200 tons. The different force ratio and number of rams will depend on what you intend to bale. Obviously, more rams and force means you can bale harder / larger / stronger materials.

HORIZONTAL BALERS:

Horizontal balers are larger machines that loaded from the top by conveyor belt or forklift. They compress from the sides, and are usually semi/fully automatic. These machines are ideal for larger quantities of recyclables.

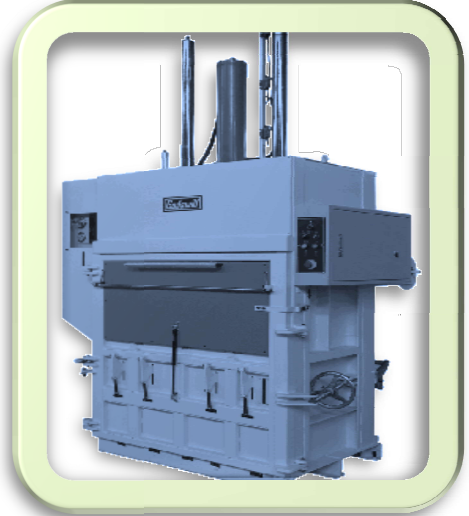
across many industries. They are capable of recycling a variety of materials including cardboard / paper, fiber, plastic, "loose" materials like sawdust and peanut shells. Their large feed capacity also makes horizontal baling press machines ideal for bulky waste recycling. The larger / faster machines are the top choice for MRF's (materials recovery facilities) and waste recycling operations.



CATEGORY BY APPLICATION

MANUAL BALER:

Manual baler machine is typically vertical baling machines that are loaded from the front. However, do not let the word "manual" leads you to doubt its efficiency because all these baling machines are electric controlled for easy operation, and simply by operating on a button or switch, the machine can fulfill the entire baling cycle automatically. The cost to operate the machine is greatly lowered. Another advantage of selecting a manual vertical bailing machine is their size. These recycling machines can fit almost anywhere, and are quite movable, making them ideal for anyone who has waste to bale. If space is an issue for you, look vertical balers are small and compact in design. **Recommended load-5-10 ton per shift**



SEMI AUTOMATIC BALER :

Semi automatic baler machines are larger recycling baling machines that can be continuously fed with material either manually, by automatic conveyor. Therefore, these horizontal baler are ideal for larger quantities of recyclables, as it can reach an output ranging from 1 ton to 15 tons per hour.

With a compressing force of anywhere from 5 tons to 120 tons, these hydraulic baling presses can be found across many industries, and are capable of recycling a variety of waste materials, from cardboard / paper (well known as horizontal cardboard baler) to fiber or plastic to "loose" materials like sawdust and rice husks. Their large feed capacity also makes it ideal for bulky waste recycling, such as boxboards and many other fibrous products. If connected with an automatic conveyor feeding system. **Recommended load-15-25 ton per shift**



AUTOMATIC BALER:

Automatic baler is typically loaded from the top and you can link it to any skid load, in-feed conveyor, as well as air blown systems to achieve full automation from material feeding to tidy bales, and automatically discharged onto a rolling conveyor. These larger and faster horizontal baler machines are also the top choice for MRF's (materials recovery facilities) recycling operations. . Means from the feeding of the waste input to the compaction and the ejection of the final product through the paper baler or the plastic baler, the whole process is fully automated in automatic balers. **Recommended load-15-20 ton per hour.**





GARBAGE BALER/GARBAGE COMPACTOR

The garbage compactor is also known as trash compactor. This machine is specially designed for compressing daily trash or garbage. The daily garbage waste can be paper, carton, film, textile, aluminum or steel cans, PET bottles, HDPE containers, and any other soft packaging materials. Even kitchen and organic waste that has considerable water content can be compressed by this garbage compactor

CARDBOARD BALER:

Cardboard balers is with great use in the disposal of cardboard/carton. So it is also popular as cardboard baler or carton baler and ideal baling solutions for waste recycling facilities, cardboard/paper manufacturing units, supermarkets, department stores, grocery stores, drug stores, printing facilities.



PET BOTTLE/ALUMINUM CAN BALER:

This vertical hydraulic press is designed for long stroke pressing and known as bottle baling machine or can press bailing machines. is ideal for crushing hollow products such as PET bottles and aluminum cans into tight and compact bales for easy handling, storage and transportation. One time saving factor is that it combines baling and draining liquid in liquid tray in same time.



TEXTILE BALER/ CLOTH BALER:

A lifting chamber baler machine is sometimes popular as used clothes baler, clothing baler, as well as textile baler. It specifically suits to meet the baling demands of the textile waste recycling industry. It is an ideal baling press choice for almost any textile manufacturer, used clothes recycling center, second-hand clothing stores / dealers, clothing exporters, as well as wiping rag graders. The lifting chamber balers are unique in that they are very simple to operate. The lifting chamber makes tying and wrapping bales simpler,

AGRICULTURE WASTE BALER

The agriculture sector of our country employs the highest number of people and is a major contributor to the economy. It is also one of the major waste generating industries. Agriculture waste is generated during harvesting as well as while processing the agriculture produce in factories. Improper management of agricultural waste leads to the pollution of air, water and ground. It is of great value as cattle fodder, fuel, compost and export item. Hence, it's important to reuse and recycle agro-waste to obtain maximum benefits and also protect the environment.

A large quantity of agricultural waste such as wheat straw, rice husk, jute fibres, etc, is produced in India. Agriculture Baler is required to bail hay and straw. In agriculture square baler/round baler is required for bailing pressure upto 200 bar.

ROUND BALER VS SQUARE BALER

SQUARE BALER (RECTANGULAR BALER)

Square bales stack and transport better than round bales and the wads of flakes that are packed end on end into a bale are convenient for feeding out. There are balers of different sizes in this category capable of producing bales of various sizes depending on your needs

ROUND BALER

There are two types of round balers: fixed or variable chamber.

The variable chamber or belt balers have the ability to pack the hay tighter in the bale's centre, to produce a "hard core" bale. Fixed chamber balers are also known as soft core balers and require less setup and maintenance.

